

<b>Meeting with</b>	Zbigniew Pacholik
<b>Organization</b>	Nałęczów Municipality
<b>Date</b>	10 April 2009
<b>Location</b>	Phone interview

### Introduction:

Nałęczów is the city located in the eastern part of Poland, nearby Lublin. It is known from its Spa facilities. Currently, the city of Nałęczów is taking part in the contest for being the camp base for Euro 2012 Football Championship.

We have been speaking with Mr. Zbigniew Pacholik, the investment director within the municipality. He told us that the city is looking for investor.

### Projects:

The Commune of Nałęczów is looking for an investor interested in building and running a swimming pool and recreational complex in the city of Nałęczów prepared as a project known as Water Park – Nałęczów Hot Springs „Euro SPA 2012”.

The city has already made steps forward this investment:

- a current spatial development plan for the area on which the investment is to be made,
- land on which the investment is to be made,
- the concept, study and visualization of the planned objects,
- economic analyses and documents justifying the profitability of the investment,
- staff supporting the process of preparing and starting the investment,
- an extra business cooperation offer,
- a business entity in the form of a registered company under the name of “Termy Nałęczowskie” sp. z o.o.

Mr. Zbigniew Pacholik has presented us the main attributes of the investment:

- the investment offer is located in the „Town of health, beauty and sport”,
- Nałęczów will be an accommodation place for the national football team during the European Football Championship – “EURO – 2012”,
- very attractive location in a spa town,
- no similar objects on the eastern side of the Vistula river,
- the investment is located in the centre of a picturesque “Land of less Gorges” – known tourist product,
- the only such tourist attraction within 400 km radius,

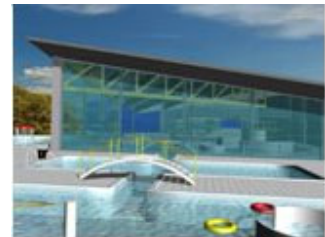
- convenient transit connections,
- excellent location between Lublin, Kazimierz Dolny and Puławy,
- it is possible to open a hotel with 300 beds in the immediate vicinity of the Water Park and to build new hotel with 200 beds on a plot of land intended for such investment and integrally associated with the area on which the Water Park is to be built,
- thousands of health resort visitors and tourists visit the town all-year-round,
- very rich cultural, entertainment and recreational offer that is being constantly expanded to attract large numbers of art and sports fans.

### Description of the object

The municipality of Nałęczów plans to announce a tender for the construction of Termy Nałęczowskie EUROSPA 2012 Water Park this year. The estimated cost of the investment is PLN 80 million.

During EURO 2012 the water park will serve as an additional accommodation base for one of the national football teams which will participate in the European Football Championship.

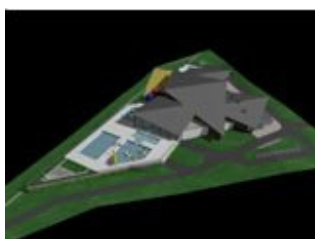
The site of the planned Water Park is situated in the immediate vicinity of picturesque gorges constituting a unique tourist attraction and the health resort of the Ministry of Internal Affairs and Administration which is currently up for sale and which can be reconstructed into a luxury hotel. The site lies next to an area intended for a park. A historic Spa Park with spa buildings of Zakład Leczniczy – “Uzdrowisko Nałęczów” S.A. lies approx. 1,000 m away.



The Water Park objects (as part of an application for a subsidy from the European Union) are ranked 16<sup>th</sup> among the largest projects in Poland having a chance to be financed from the European Union as part of Measure 6.4. “Investments in tourist products of over-regional importance” of the Operational Program Innovative Economy (POIG) 2007-2013. If a decision to finance the project is granted, the Commune may expect capital from the European Regional Development Fund covering 50% of the costs of the investment. In this case the project will be carried out in cooperation with a private partner as part of a building license.



If no financing is granted, a tender will be awarded to find an investor as part of the building license for the full value of the project.



The planned object will have outdoor and indoor swimming pools of a total water surface area of approx. 1,835 m<sup>2</sup>, which will be fed with water from the Nałęczów spring promoting spa treatment. The indoor water surface area will have 920 m<sup>2</sup>, and the outdoor water surface area will have 915 m<sup>2</sup>. The water park will be open all-year-round. The water in the swimming pools (including the water in the



outdoor pools also during the autumn and winter seasons - which will constitute an additional attraction) will be heated to around 35-40oC.

The swimming pools, with their various attractions (slides, whirlpool, aqua massage, fountains-geysers, waterfalls-massage sprinklers, saunas, solaria, attractions for kids and youth such as water "line park", waves - rings to create waves and an outdoor climbing wall, etc.) will play balneological and recreational roles.

**More information:**

Contact details of: Nałęczów Municipality (Urząd Miejski w Nałęczowie)

**Address:**

Mr. Zbigniew Pacholik

URZĄD MIEJSKI W NAŁĘCZOWIE

Ul. Lipowa 3

24-150 Nałęczów

Tel: +48 81 5014500

e-mail: um@nalczew.pl